

FLEXBAR

FLEXIBLE BARS AND TROLLEYS
MADE IN SWEDEN





INDEX	03	About Us
	06	Pro 8
	14	Fusion 6
	18	Trolleys
	27	Contact

Flexbar is built on real-world experience.
Experience from events, hotels, and the people who run them.

We know what works.
We know what doesn't.
And we know how to build solutions that keep up.

Made in Sweden, our bars and trolleys are designed to last, adapt,
and perform — wherever they're used.

Every detail is shaped by what we've learned on the floor,
helping professionals create seamless, memorable experiences.

Flexbar is experience, built into every detail.

Made in Sweden Craftsmanship Meets Innovation

At Flexbar, everything begins in Gothenburg, Sweden. Our mobile bars and trolleys are crafted with care, combining Scandinavian precision with forward-thinking design. Built to last and perform, we push boundaries to stay ahead of the industry while staying true to quality and sustainability.



Flexibility

Our two core models — the full-size Flexbar Pro 8 and the compact Fusion 6 — are both built around the same smart folding system. Setup takes just 30 seconds, no tools or loose parts required. When not in use, they fold down to a fraction of their size for effortless storage and transport.

Whether you're running a check-in desk, a wine bar, or a breakfast buffet, Flexbar adapts to every setting — indoors or out. Magnetic front panels allow instant rebranding, while smart details like adjustable ice bucket holes ensure seamless functionality.

Sustainability and Innovation

Sustainability is at the heart of everything we do. Our bars are made from recycled materials and assembled locally in Sweden to minimize environmental impact. Every unit is designed for long-term use, and can easily be dismantled and recycled at the end of its life. It's circular design — done right.



Customization Options

Both Flexbar Pro 8 and Fusion 6 are fully customizable. Switch looks in seconds with magnetic foil panels — ideal for moving between different themes, events, or times of day. From minimalist metallics to vibrant color palettes, you create the vibe.

Available materials include:

- Stainless Steel Plates – for a modern, polished aesthetic
- Ribbon-Wood Slats – adding warmth and natural texture
- Magnetic Foil on Galvanized Steel – for fast, flexible branding



Magnetic Foil on Galvanized Steel



Ribbon-Wood



Design Stainless Steel



Flexbar Pro 8

Our Signature Mobile Bar – Built for Performance

Flexbar Pro 8 is our flagship full-size mobile bar — designed for professionals who demand speed, style, and smart functionality. It unfolds in just 30 seconds with no tools or loose parts, offering generous workspace with features like adjustable ice bucket holes and magnetic front panels for effortless rebranding.

Proudly made in Sweden from recycled materials, the Pro 8 is as sustainable as it is durable. Fold it, move it, set it up — wherever great service is needed.



Pro 8 - Frame Color Options

Designed for both function and atmosphere

Our mobile bars are available in two carefully selected frame finishes: Silk Grey and Black.

Silk Grey offers a clean, modern look that works beautifully in bright or outdoor environments. The lighter tone doesn't absorb heat as quickly, making it a smart choice for sunny terraces, poolside setups, or other warm outdoor spaces.

Black adds depth and elegance — ideal for indoor use or covered areas. It brings a bold, refined presence that pairs well with ambient lighting, making it perfect for lounges, receptions, and evening events.

Both options are powder-coated for durability and built to withstand demanding environments. Choose the tone that best complements your space, your brand — and the atmosphere you want to create.



Pro 8 Black

- Frame: Black or Silk Gray (Ral 7044) powder-coated aluminum
- Front: Powder-coated galvanized steel
- Work Bench: Powder-coated galvanized steel
- Top: Powder-coated galvanized steel
- Dimensions: W 236 cm x D 126 cm x H 117 cm
- Folded Dimensions: W 43 cm x D 118 cm x H 148 cm
- Weight: 120 kg
- Includes: 2 speed racks, 2 ice bins, 1 protective cover

Optional Add-ons:

- Top in brushed stainless steel
- Magnetic foil
- Wheel cover
- LED light package with battery pack



Description:

The Flexbar Pro 8 combines sleek design with smart functionality — ideal for any event or venue. Built with a durable black aluminum frame and powder-coated galvanized steel panels, it's made to withstand demanding use without compromising on style.

A spacious workbench offers plenty of room for drink preparation, and included speed racks and ice bins can be easily mounted for efficient service. When not in use, the bar folds down quickly into a compact size for easy storage and transport.

Pro 8 Wooden ribs

- Frame: Black or Silk Gray (Ral 7044) powder-coated aluminum
- Front: Sound Absorbing Panel
- Work Bench: Powder-coated galvanized steel
- Top: Powder-coated galvanized steel
- Dimensions: W 236 cm x D 126 cm x H 117 cm
- Folded Dimensions: W 43 cm x D 118 cm x H 148 cm
- Weight: 115 kg
- Includes: 2 speed racks, 2 ice bins, 1 protective cover

Optional Add-ons:

- Top in brushed stainless steel
- Wheel cover
- LED light package with battery pack



Description:

This version of the Pro 8 offers a perfect blend of functionality and sophistication. Equipped with sound-absorbing panels, it helps create a warm, welcoming atmosphere where conversations can flow comfortably — even in lively environments.

With a sturdy black aluminum frame and powder-coated galvanized steel components, this bar is built to last while maintaining a sleek, modern look.

Pro 8 Design Stainless Steel

- Frame: Black powder-coated aluminum
- Front: Design stainless steel
- Work Bench: Powder-coated galvanized steel
- Top: Powder-coated galvanized steel
- Dimensions: W 236 cm x D 126 cm x H 117 cm
- Folded Dimensions: W 43 cm x D 118 cm x H 148 cm
- Weight: 120 kg
- Includes: 2 speed racks, 2 ice bins, 1 protective cover

Optional Add-ons:

- Top in brushed stainless steel
- Wheel cover
- LED light package with battery pack



Description:

Flexbar Pro 8 sets the standard for elegance and versatility in a full-size mobile bar. With its black aluminum frame and design stainless steel front, it brings a sleek, refined look that makes it the centerpiece of any event or venue.

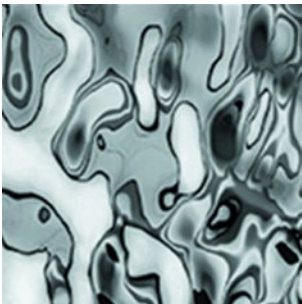
The powder-coated galvanized steel workbench ensures long-lasting durability, while the option of a black brushed stainless steel or design stainless steel countertop allows you to tailor the bar to match your brand or aesthetic.

Design Stainless Steel

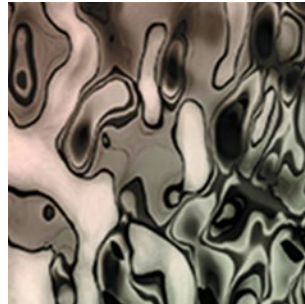
Modern elegance. Built to last.

Refine the look of your Flexbar with our stainless steel design panels. With their clean lines and polished surfaces, these panels add a sleek, contemporary edge — while offering exceptional durability for demanding environments. A perfect blend of function and sophistication.

These panels are available for the Flexbar Pro 8, and can be paired with either a brushed stainless steel or design stainless steel countertop to create a unified, high-end aesthetic. Looking for something special? We offer additional custom options beyond what's shown here. Let us help you create the perfect visual expression.



Mirage Super Mirror



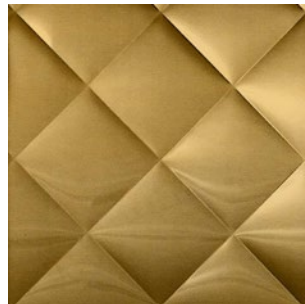
Mirage Oynx Black Mirror



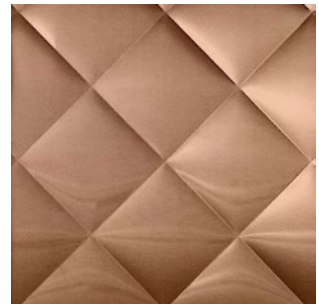
Mirage Prestige Gold Mirror



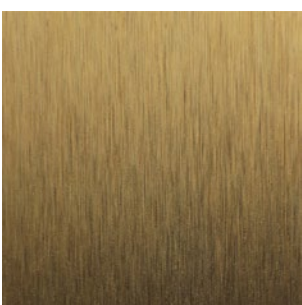
Black Quilted



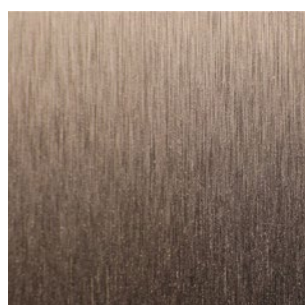
Gold Quilted



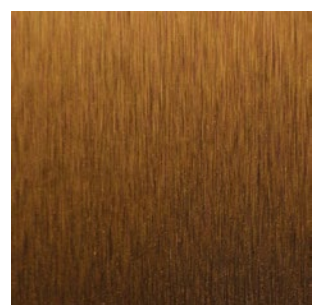
Rosy Gold Quilted



Gold Satin



Champagne Satin



Rosy Gold Satin

Wood Panel

Style meets comfort

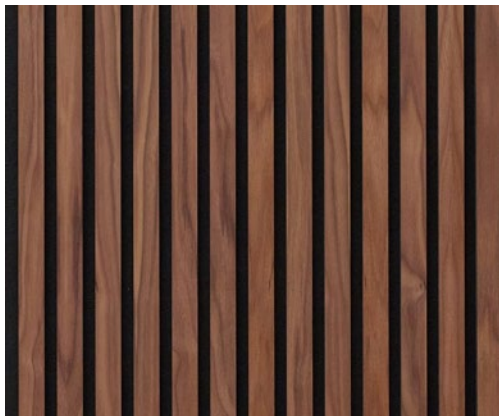
Add warmth and sophistication to your Flexbar setup with our elegant sound-absorbing panels. Designed to soften ambient noise and improve acoustics, they help create a calm, welcoming atmosphere — perfect for social gatherings, indoor events, or any setting where sound matters as much as style.



Oak



White Oak



Walnut

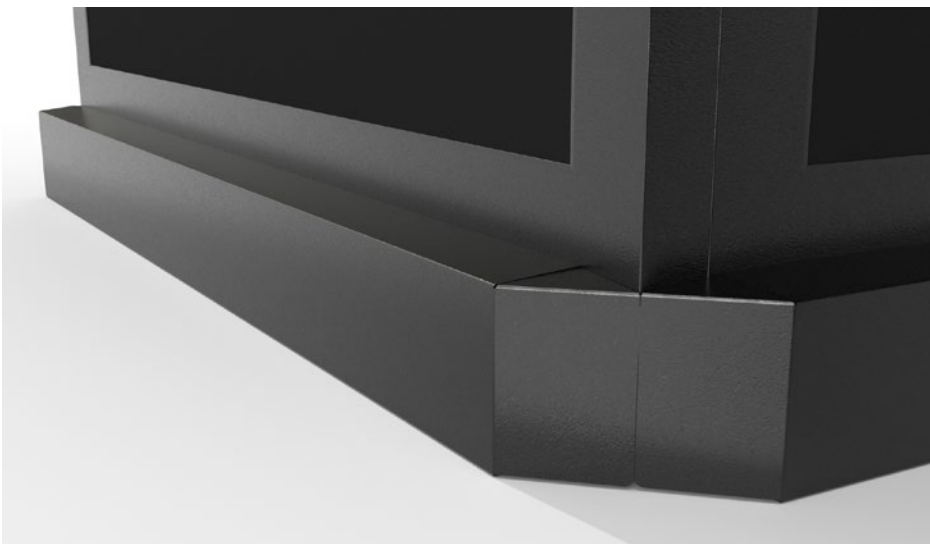


Ash

Accessories

Flexbar offers a diverse range of accessories to complement and enhance the functionality of our mobile bars. Our selection:

- **Protective Covers:** Keep your mobile bar protected during storage with our durable protective covers.
- **Speed Racks:** Organize your bottles efficiently with our specially designed speed racks, ensuring quick and easy access to your beverages.
- **Ice Bins:** Keep your drinks chilled with ice from our convenient ice bins, designed to fit seamlessly into your mobile bar setup.
- **Wireless LED Lighting:** Illuminate your event with our wireless LED lighting system, featuring four lights and a USB hub. Create the perfect ambiance and highlight your mobile bar with ease.
- **Wheel Covers:** Hide the wheels of your mobile bar with our wheel covers, providing a seamless and polished appearance for any event setup.
- **Bar-Mat:** Complete your mobile bar setup with our durable and stylish bar-mat, providing a non-slip surface for serving drinks and protecting your countertop.
- **Water Tap:** Stay hydrated and refreshed with our water tap accessory, connected to a fresh water bin for convenient access to cold, clean water.
- **Sink:** Enhance the functionality of your mobile bar with a sink accessory, equipped to handle ice melt and other waste water, ensuring easy cleanup and hygiene maintenance.



Flexbar Fusion 6

Compact. Modular. Versatile.

Meet Fusion 6 — our latest addition to the Flexbar family. A slightly smaller mobile bar with the same smart folding mechanism as the Flexbar Pro 8. Quick to set up, easy to store, and designed to handle any situation with style.

Fusion 6 is perfect when space is limited or when flexibility is key. Use it on its own for smaller events, or connect multiple units to create a longer bar setup in seconds. Thanks to its clean design and open format, Fusion 6 also doubles beautifully as a buffet or self-service table — whether it's breakfast, mingling or late-night snacks.

Built with the same attention to quality, sustainability and customization as the rest of our lineup, Fusion 6 offers a smaller footprint without compromising on performance.



Fusion 6 - Black

- Frame: Black powder-coated aluminum
- Front: Powder-coated galvanized steel
- Work Bench: Powder-coated galvanized steel
- Top: Powder-coated galvanized steel
- Dimensions: W 185 cm x D 69 cm x H 115 cm
- Folded Dimensions: W 99 cm x D 33 cm x H 118 cm
- Weight: 88 kg
- Includes: Protective cover

Optional Add-ons:

- Speedrack
- Icebins
- Magnetic foil
- Led light package with battery pack



Fusion 6 Wooden Ribbs

- Frame: Black powder-coated aluminum
- Front: Powder-coated galvanized steel
- Work Bench: Powder-coated galvanized steel
- Top: Powder-coated galvanized steel
- Dimensions: W 185 cm x D 69 cm x H 115 cm
- Folded Dimensions: W 99 cm x D 33 cm x H 118 cm
- Weight: 88 kg
- Includes: Protective cover

Optional Add-ons:

- Speedrack
- Icebins
- Magnetic foil
- Led light package with battery pack





Flexible Trolleys for Every Need

Smart mobility. Seamless support.

Our versatile trolleys bring flexibility and function to your service setup offering tailored solutions for cooling, water supply, and stylish product display. With smooth handling and a clean, compact design, they're the perfect support units for any event or venue where presentation matters.





Bar Trolley

A compact bar trolley, designed to provide style, flexibility, and efficiency for any event or venue.

Built-in fridge to keep drinks chilled

Two top-mounted containers for ice or bottles

Side-mounted speed racks for easy bottle access

Effortlessly mobile for versatile setups



Backbar Trolley

A versatile and mobile backbar trolley, offering flexible refrigeration and efficient support for any event or venue.

Built-in fridge for additional cooling capacity.

Ideal as a mobile backbar for larger setups.

Compact design for easy integration with existing bars.

Quick access speed racks for smooth service.



Water Trolley

The complete mobile water and refrigeration solution, providing fresh water and chilled storage where you need it.

Sink and water tap for easy water access.

Fresh and waste water tanks for self-contained operation.

Built-in fridge for cooling drinks or ingredients.

Fully mobile to serve as a flexible water station.

Bar Trolley

Sleek and Flexible Mobile Bar

A sleek and mobile bar solution designed to deliver style and flexibility for any event. Whether you're serving drinks in a hotel lobby or creating a pre-drink station on a terrace, the Bar Trolley adapts to your needs with ease.



Key Features:

- Built-in fridge keeps drinks perfectly chilled.
- Top-mounted containers are perfect for ice or bottles.
- Side-mounted speed racks for quick access to bottles.
- Effortless mobility allows you to roll it into any setup.

Versatile Uses:

From hotel lobbies to terraces and outdoor events, the Bar Trolley is ready to serve. Its sleek, modern design makes it the perfect fit for any space.

Specifications:

- Material: Aluminum
- Dimensions (cm): W 102 x D 58 x H 103
- Weight: 61 kg
- Energy Consumption: 1.1 kWh/24h
- Noise Level: 52 dB(A)
- Temperature Range: 0°C to 10°C
- Cooling Compartment: 105 liters

Capacity:

- 33 cl bottles: 56 pcs
- 25 cl cans: 180 pcs
- 33 cl cans: 126 pcs



With a durable design and modern aesthetic, the Bar Trolley blends effortlessly into any space and suits both high-intensity events and intimate settings.

Backbar Trolley

Versatile, Mobile Refrigeration

The Backbar Trolley provides flexible refrigeration with the added benefit of easy mobility. Whether you need extra cooling capacity or a mobile backbar, this trolley offers seamless integration with the Flexbar setup.



Key Features:

- Built-in fridge keeps drinks and ingredients chilled.
- Side-mounted speed racks provide easy access to bottles.
- Smooth mobility allows for effortless relocation.

Perfect for:

- Supporting Flexbar setups as a mobile backbar
- Buffets requiring on-demand refrigeration
- Event venues that need flexible, extra cooling capacity

Specifications:

- Material: Aluminum
- Dimensions (cm): W 102 x D 58 x H 103
- Weight: 75 kg
- Energy Consumption: 1.68 kWh/24h
- Noise Level: 52 dB(A)
- Temperature Range: 0°C to 10°C
- Cooling Compartment: 158 liters

Capacity:

- 33 cl bottles: 84 pcs
- 25 cl cans: 280 pcs
- 33 cl cans: 216 pcs



With its mobility and reliable cooling, the Backbar Trolley enhances service efficiency and is a valuable addition to any venue.

Water Trolley

Water Access and Cooling in One

The Water Trolley is your all-in-one solution for mobile water and refrigeration. Featuring a sink, water tap, and built-in fridge, this trolley is perfect for venues and events that require both fresh water and cooling, all in a compact system.



Key Features:

- Sink and water tap for easy access to fresh water.
- Fresh and waste water tanks for self-contained operation.
- Built-in fridge for chilled beverages and ingredients.
- Effortless mobility makes it easy to move wherever needed.

Versatile Use:

Ideal for event support, pop-up stations, and temporary setups, the Water Trolley brings convenience and functionality wherever it's required.

Specifications:

- Material: Aluminum
- Dimensions (cm): W 102 x D 58 x H 103
- Weight: 61 kg
- Energy Consumption: 1.1 kWh/24h
- Noise Level: 52 dB(A)
- Temperature Range: 0°C to 10°C
- Cooling Compartment: 105 liters

Capacity:

- 33 cl bottles: 56 pcs
- 25 cl cans: 180 pcs
- 33 cl cans: 126 pcs



With water access, refrigeration, and easy mobility, the Water Trolley is a complete solution for any event or service operation.







Contact Us


Ready to elevate your event or venue with Flexbar?
Get in touch to learn more about Flexbar products or
to place an order.

We are here to help you find the perfect mobile bar
and trolley solutions for your needs.

Servaclean Bar Systems
Gower Street
Bradford
BD5 7JF

Email: info@servaclean.co.uk
Phone: 01274 390038
Website: www.servaclean.co.uk

Follow us on social media for the latest
updates and design inspiration:

 @servaclean

www.servaclean.co.uk