

FLEXBAR

FLEXIBLE BARS AND TROLLEYS





INDEX

03 THE COMPANY

06 PRO 8

14 FUSION 6

Every Flexbar product is born out of real-world experience.

We know what works, what doesn't, and how to make life easier for the people who need reliable, flexible solutions that can keep up with the fast pace of events and the hospitality world.

Made in Sweden, our bars and trolleys aren't just about looking good – they're built to last, adapt, and deliver, no matter the setting.

We've seen it all, and we've poured that knowledge into creating products that help event and hotel pros everywhere pull off amazing experiences.

**Flexbar isn't just another product –
it's a game-changer.**

Made in Sweden Craftsmanship Meets Innovation

At Flexbar, everything begins in Gothenburg, Sweden. Our mobile bars and trolleys are crafted with care, combining Scandinavian precision with forward-thinking design. Built to last and perform, we push boundaries to stay ahead of the industry while staying true to quality and sustainability.



Flexibility

Our two core models — the full-size Flexbar Pro 8 and the compact Fusion 6 — are both built around the same smart folding system. Setup takes just 30 seconds, no tools or loose parts required. When not in use, they fold down to a fraction of their size for effortless storage and transport.

Whether you're running a check-in desk, a wine bar, or a breakfast buffet, Flexbar adapts to every setting — indoors or out. Magnetic front panels allow instant rebranding, while smart details like adjustable ice bucket holes ensure seamless functionality.

Sustainability and Innovation

Sustainability is at the heart of everything we do. Our bars are made from recycled materials and assembled locally in Sweden to minimize environmental impact. Every unit is designed for long-term use, and can easily be dismantled and recycled at the end of its life. It's circular design — done right.



Customization Options

Both Flexbar Pro 8 and Fusion 6 are fully customizable. Switch looks in seconds with magnetic foil panels — ideal for moving between different themes, events, or times of day. From minimalist metallics to vibrant color palettes, you create the vibe.

Available materials include:

- Stainless Steel Plates – for a modern, polished aesthetic
- Ribbon-Wood Slats – adding warmth and natural texture
- Magnetic Foil on Galvanized Steel – for fast, flexible branding



**Magnetic Foil on
Galvanized Steel**



Ribbon-Wood



Design Stainless Steel



Flexbar Pro 8

Our Signature Mobile Bar – Built for Performance

Flexbar Pro 8 is our flagship full-size mobile bar — designed for professionals who demand speed, style, and smart functionality. It unfolds in just 30 seconds with no tools or loose parts, offering generous workspace with features like adjustable ice bucket holes and magnetic front panels for effortless rebranding.

Proudly made in Sweden from recycled materials, the Pro 8 is as sustainable as it is durable. Fold it, move it, set it up — wherever great service is needed.



Pro 8 - Frame Color Options

Designed for both function and atmosphere

Our mobile bars are available in two carefully selected frame finishes: Silk Grey and Black.

Silk Grey offers a clean, modern look that works beautifully in bright or outdoor environments. The lighter tone doesn't absorb heat as quickly, making it a smart choice for sunny terraces, poolside setups, or other warm outdoor spaces.

Black adds depth and elegance — ideal for indoor use or covered areas. It brings a bold, refined presence that pairs well with ambient lighting, making it perfect for lounges, receptions, and evening events.

Both options are powder-coated for durability and built to withstand demanding environments. Choose the tone that best complements your space, your brand — and the atmosphere you want to create.



Pro 8 Black

- Frame: Black or Silk Gray (Ral 7044) powder-coated aluminum
- Front: Powder-coated galvanized steel
- Work Bench: Powder-coated galvanized steel
- Top: Powder-coated galvanized steel
- Dimensions: W 236 cm x D 126 cm x H 117 cm
- Folded Dimensions: W 43 cm x D 118 cm x H 148 cm
- Weight: 120 kg
- Includes: 2 speed racks, 2 ice bins, 1 protective cover

Optional Add-ons:

- Top in brushed stainless steel
- Magnetic foil
- Wheel cover
- LED light package with battery pack



Description:

The Flexbar Pro 8 combines sleek design with smart functionality — ideal for any event or venue. Built with a durable black aluminum frame and powder-coated galvanized steel panels, it's made to withstand demanding use without compromising on style.

A spacious workbench offers plenty of room for drink preparation, and included speed racks and ice bins can be easily mounted for efficient service. When not in use, the bar folds down quickly into a compact size for easy storage and transport.

Pro 8 Wooden ribs

- Frame: Black or Silk Gray (Ral 7044) powder-coated aluminum
- Front: Sound Absorbing Panel
- Work Bench: Powder-coated galvanized steel
- Top: Powder-coated galvanized steel
- Dimensions: W 236 cm x D 126 cm x H 117 cm
- Folded Dimensions: W 43 cm x D 118 cm x H 148 cm
- Weight: 115 kg
- Includes: 2 speed racks, 2 ice bins, 1 protective cover

Optional Add-ons:

- Top in brushed stainless steel
- Wheel cover
- LED light package with battery pack



Description:

This version of the Pro 8 offers a perfect blend of functionality and sophistication. Equipped with sound-absorbing panels, it helps create a warm, welcoming atmosphere where conversations can flow comfortably — even in lively environments.

With a sturdy black aluminum frame and powder-coated galvanized steel components, this bar is built to last while maintaining a sleek, modern look.

Pro 8 Design Stainless Steel

- Frame: Black powder-coated aluminum
- Front: Design stainless steel
- Work Bench: Powder-coated galvanized steel
- Top: Powder-coated galvanized steel
- Dimensions: W 236 cm x D 126 cm x H 117 cm
- Folded Dimensions: W 43 cm x D 118 cm x H 148 cm
- Weight: 120 kg
- Includes: 2 speed racks, 2 ice bins, 1 protective cover

Optional Add-ons:

- Top in brushed stainless steel
- Wheel cover
- LED light package with battery pack



Description:

Flexbar Pro 8 sets the standard for elegance and versatility in a full-size mobile bar. With its black aluminum frame and design stainless steel front, it brings a sleek, refined look that makes it the centerpiece of any event or venue.

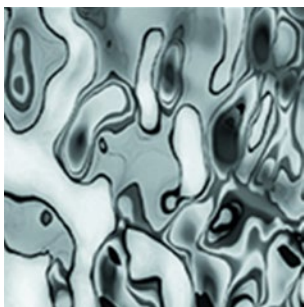
The powder-coated galvanized steel workbench ensures long-lasting durability, while the option of a black brushed stainless steel or design stainless steel countertop allows you to tailor the bar to match your brand or aesthetic.

Design Stainless Steel

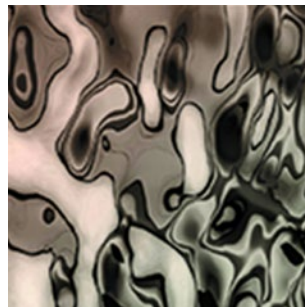
Modern elegance. Built to last.

Refine the look of your Flexbar with our stainless steel design panels. With their clean lines and polished surfaces, these panels add a sleek, contemporary edge — while offering exceptional durability for demanding environments. A perfect blend of function and sophistication.

These panels are available for the Flexbar Pro 8, and can be paired with either a brushed stainless steel or design stainless steel countertop to create a unified, high-end aesthetic. Looking for something special? We offer additional custom options beyond what's shown here. Let us help you create the perfect visual expression.



Mirage Super Mirror



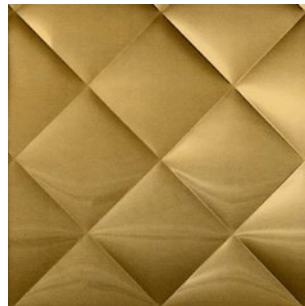
Mirage Oynx Black Mirror



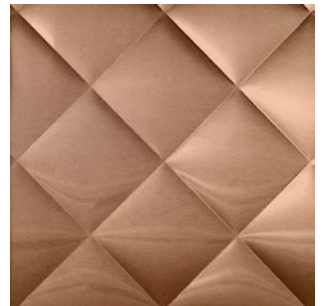
Mirage Prestige Gold Mirror



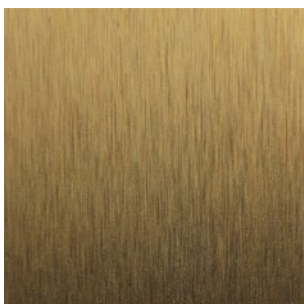
Black Quilted



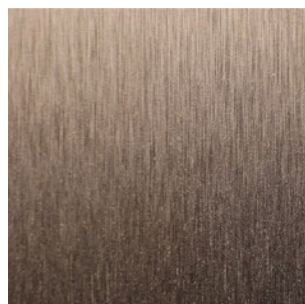
Gold Quilted



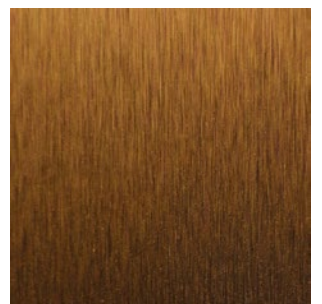
Rosy Gold Quilted



Gold Satin



Champagne Satin



Rosy Gold Satin

SOUND ABSORBING PANEL

Style meets comfort

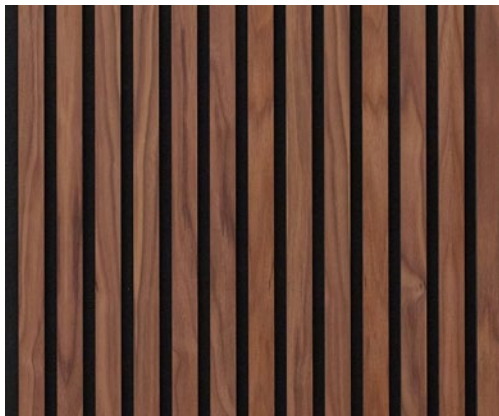
Add warmth and sophistication to your Flexbar setup with our elegant sound-absorbing panels. Designed to soften ambient noise and improve acoustics, they help create a calm, welcoming atmosphere — perfect for social gatherings, indoor events, or any setting where sound matters as much as style.



Oak



White Oak



Walnut



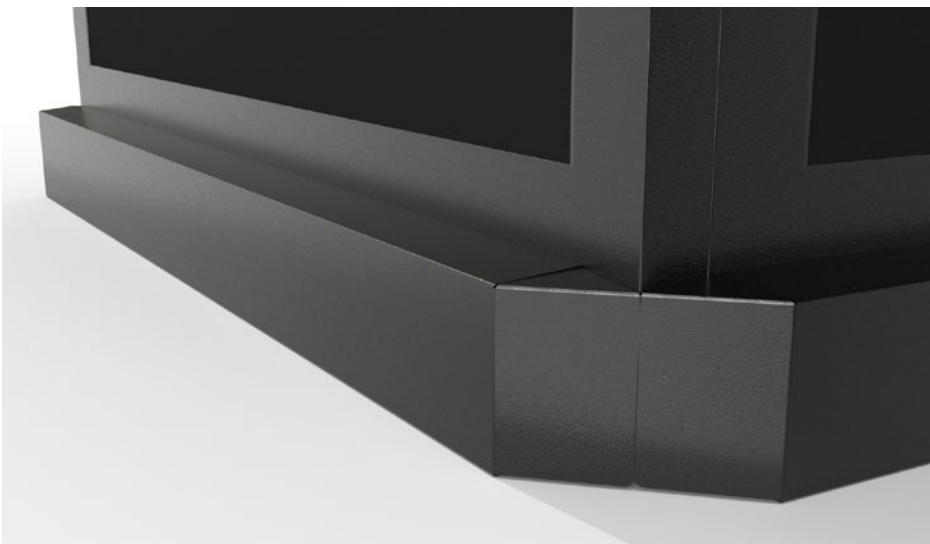
Ash



Accessories

Flexbar offers a diverse range of accessories to complement and enhance the functionality of our mobile bars. Our selection:

- **Protective Covers:** Keep your mobile bar protected during storage with our durable protective covers.
- **Speed Racks:** Organize your bottles efficiently with our specially designed speed racks, ensuring quick and easy access to your beverages.
- **Ice Bins:** Keep your drinks chilled with ice from our convenient ice bins, designed to fit seamlessly into your mobile bar setup.
- **Wireless LED Lighting:** Illuminate your event with our wireless LED lighting system, featuring four lights and a USB hub. Create the perfect ambiance and highlight your mobile bar with ease.
- **Wheel Covers:** Hide the wheels of your mobile bar with our wheel covers, providing a seamless and polished appearance for any event setup.
- **Bar-Mat:** Complete your mobile bar setup with our durable and stylish bar-mat, providing a non-slip surface for serving drinks and protecting your countertop.
- **Water Tap:** Stay hydrated and refreshed with our water tap accessory, connected to a fresh water bin for convenient access to cold, clean water.
- **Sink:** Enhance the functionality of your mobile bar with a sink accessory, equipped to handle ice melt and other waste water, ensuring easy cleanup and hygiene maintenance.



Flexbar Fusion 6

Compact. Modular. Versatile.

Meet Fusion 6 — our latest addition to the Flexbar family. A slightly smaller mobile bar with the same smart folding mechanism as the Flexbar Pro 8. Quick to set up, easy to store, and designed to handle any situation with style.

Fusion 6 is perfect when space is limited or when flexibility is key. Use it on its own for smaller events, or connect multiple units to create a longer bar setup in seconds. Thanks to its clean design and open format, Fusion 6 also doubles beautifully as a buffet or self-service table — whether it's breakfast, mingling or late-night snacks.

Built with the same attention to quality, sustainability and customization as the rest of our lineup, Fusion 6 offers a smaller footprint without compromising on performance.



Fusion 6 - Black

- Frame: Black powder-coated aluminum
- Front: Powder-coated galvanized steel
- Work Bench: Powder-coated galvanized steel
- Top: Powder-coated galvanized steel
- Dimensions: W 185 cm x D 69 cm x H 115 cm
- Folded Dimensions: W 99 cm x D 33 cm x H 118 cm
- Weight: 88 kg
- Includes: Protective cover

Optional Add-ons:

- Speedrack
- Icebins
- Magnetic foil
- Led light package with battery pack



Fusion 6 Wooden Ribbs

- Frame: Black powder-coated aluminum
- Front: Powder-coated galvanized steel
- Work Bench: Powder-coated galvanized steel
- Top: Powder-coated galvanized steel
- Dimensions: W 185 cm x D 69 cm x H 115 cm
- Folded Dimensions: W 99 cm x D 33 cm x H 118 cm
- Weight: 88 kg
- Includes: Protective cover

Optional Add-ons:

- Speedrack
- Icebins
- Magnetic foil
- Led light package with battery pack

